

Diploma 3<sup>rd</sup> sem (Internal Assessment)  
Estimating and Cost Evaluation-1 <sup>1st</sup>  
 Total = 20 marks

1. Answer all the questions (2x5 = 10 marks)

a. Write down the units of measurement for the items:

- (i) Honey Comb brick masonry
- (ii) Reinforcement
- (iii) Glass panes
- (iv) Form work

(b) Define Lumpsum in Estimating?

(c) Define Carpet area?

(d) What is Supplementary Estimate?

(e) Define Administrative Approval?

2. Answer any two questions? (5x2 = 10 marks)

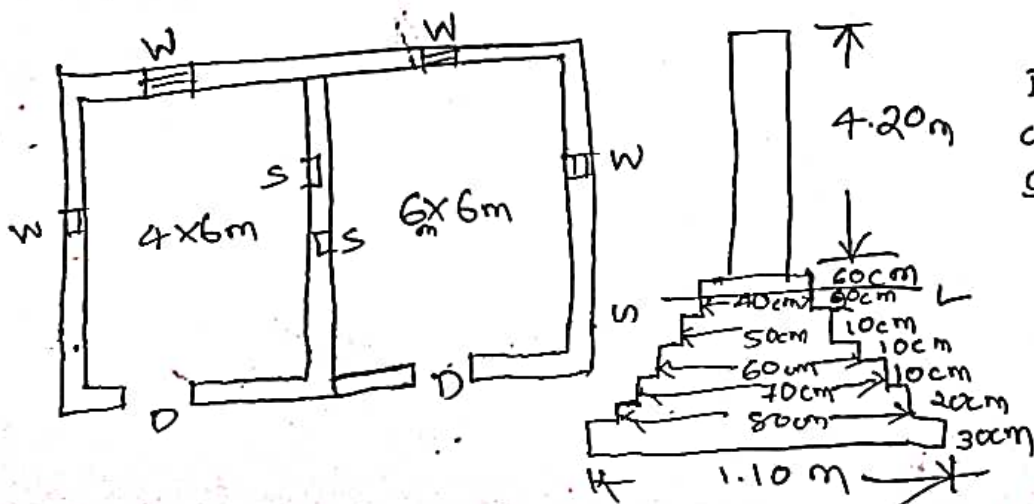
(a) Write briefly on Longwall, short wall method, and centre line method?

(b) Write Briefly on different types of estimate?

(c) Estimate the quantities of the following items of

a. two roomed building from given plan & section.

- (i) Earthwork in excavation in foundation
- (ii) Lime concrete in foundation.
- (iii) First class brickwork on foundation & plinth.



Door = 1.2m x 2.10m  
 Window = 1.00m x 1.50m  
 Shelves = S = 1.00m x 1.5m

Estimating & Cost Evaluation - I

Total = 20 marks

1. Answer all the questions (2x5 = 10 marks)
- (a) Write down volume of a bag of cement?
  - (b) Define Rate analysis?
  - (c) What is the standard weight of a 16mm diameter bar of 1m length?
  - (d) Define ~~Scrap~~ Scrap value?
  - (e) Define Depreciation?

2. Answer any two questions (5x2 = 10 marks)

- (a) Find out the quantity of cement concrete (1:4:8) required for a trapezoidal square footing of size 2m at bottom and 30cm at top with 38cm depth.
- (b) Calculate the dry materials required for 10cum cement concrete of M<sub>5</sub> (1:5:10) grade in foundation with stone balast 40mm.
- (c) Write the duties and responsibilities of a Junior Engineer.

